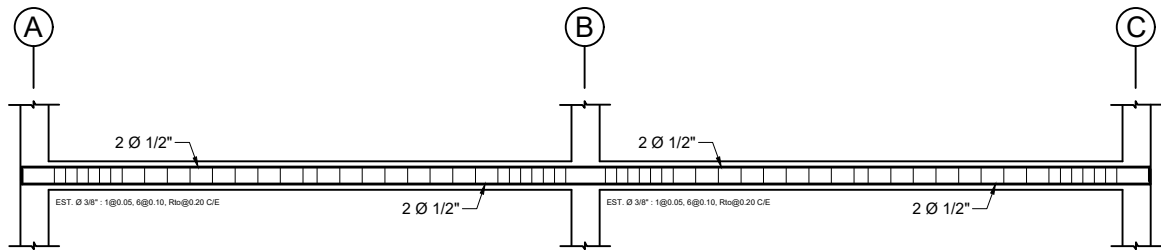


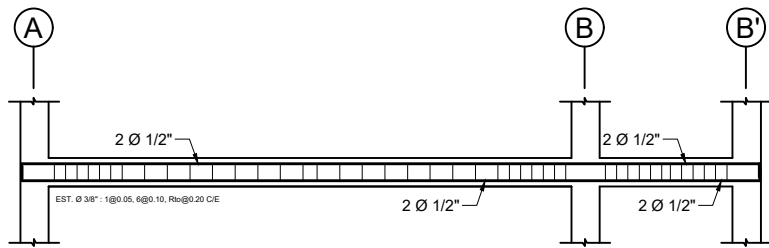
**VIGA V-101 (25cm x 20cm)**

ESC. 1/100



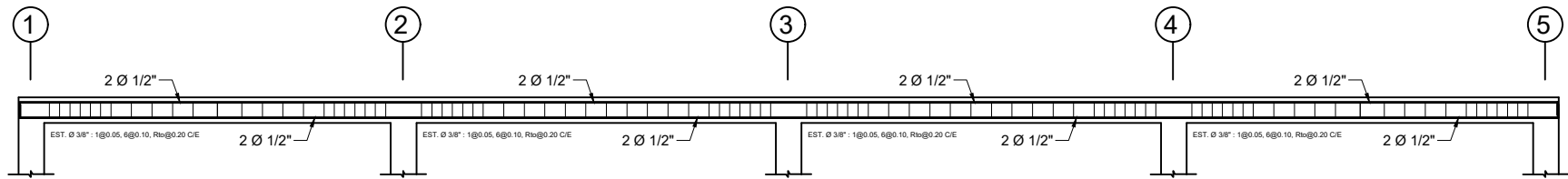
**VIGA V-102 (25cm x 20cm)**

ESC. 1/100



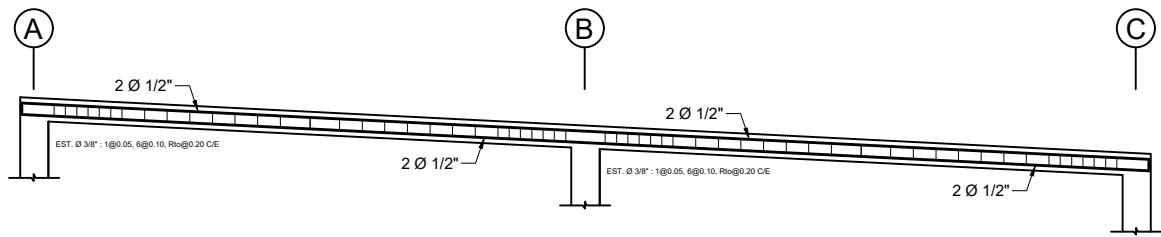
**VIGA V-103 (25cm x 20cm)**

ESC. 1/100



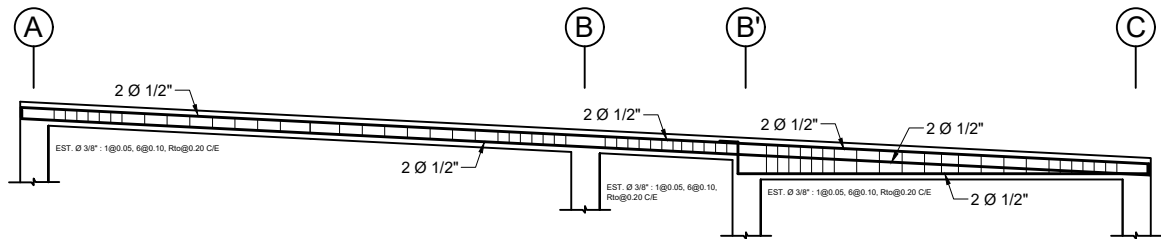
**VIGA V-201 (25cm x 20cm)**

ESC. 1/100



**VIGA V-202 (25cm x 20cm)**

ESC. 1/100



**VIGA V-203 (25cm x 20cm)**

ESC. 1/100

CUADRO DETALLE TÍPICO DE VIGAS							
NIVEL	TIPO	V-101	V-102	V-103	V-201	V-202	V-203
1º	MATERIAL	CONCRETO ARMADO	CONCRETO ARMADO	CONCRETO ARMADO	CONCRETO ARMADO	CONCRETO ARMADO	CONCRETO ARMADO
	SECCION	0.25 x 0.20 m	0.25 x 0.20 m	0.25 x 0.20 m	0.25 x 0.20 m	0.25 x 0.20 m	0.25 x 0.20 m
	As	4 Ø 1/2"	4 Ø 1/2"	4 Ø 1/2"	4 Ø 1/2"	4 Ø 1/2"	4 Ø 1/2"
	ESTRIBO	1 Ø 3/8" 1 @ 0.05, 6 @ 0.10, Rto @ 0.20 c/c	1 Ø 3/8" 1 @ 0.05, 6 @ 0.10, Rto @ 0.20 c/c	1 Ø 3/8" 1 @ 0.05, 6 @ 0.10, Rto @ 0.20 c/c	1 Ø 3/8" 1 @ 0.05, 6 @ 0.10, Rto @ 0.20 c/c	1 Ø 3/8" 1 @ 0.05, 6 @ 0.10, Rto @ 0.20 c/c	1 Ø 3/8" 1 @ 0.05, 6 @ 0.10, Rto @ 0.20 c/c
	GRAFICO						

PROYECTO:  
"PROCOMPITE MIRAVE"

ESPECIALIDAD:  
**ESTRUCTURAS**

PROFESIONAL RESPONSABLE:  
ING.

PLANO:  
**DETALLE DE VIGAS**

ESCALA:  
INDICADA

FECHA:  
2024

DIBUJO CAD:

MODIFICACIONES:

LAMINA :

**E-03**