

## **ZONAS UBICACIÓN DE LOS TRES (03) PROYECTOS – DEPARTAMENTO DE ANCASH**

- 1. PLANO AMPLIACIÓN DE REDES DE DISTRIBUCIÓN PRIMARIA, SECUNDARIA Y ALUMBRADO PÚBLICO DE: 1° ASOCIACION DE VIVIENDA BUENA VISTA DE CHUA, DISTRITO DE HUARAZ, 2° BARRIO LAS LOMAS (EL PINAR), DISTRITO DE INDEPENDENCIA; PROVINCIA DE HUARAZ, DEPARTAMENTO DE ANCASH.**

**Plano de ubicación del Barrio Chua en Huaraz**

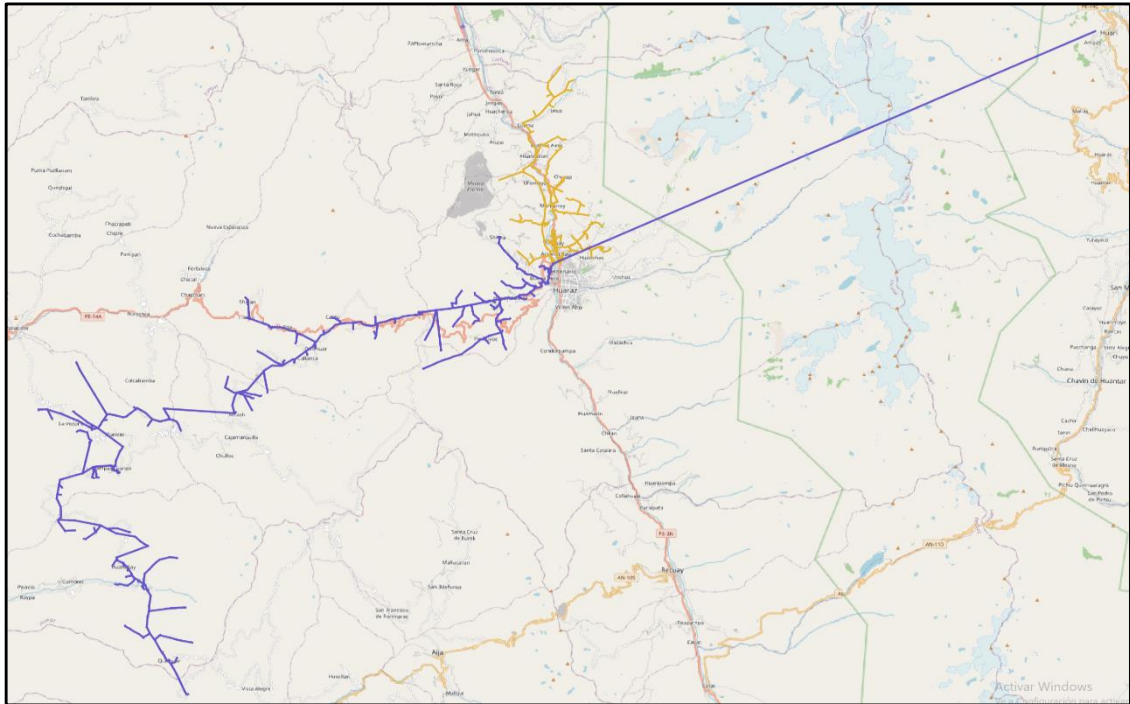


**Plano de ubicación del Barrio Las Lomas en Huaraz**



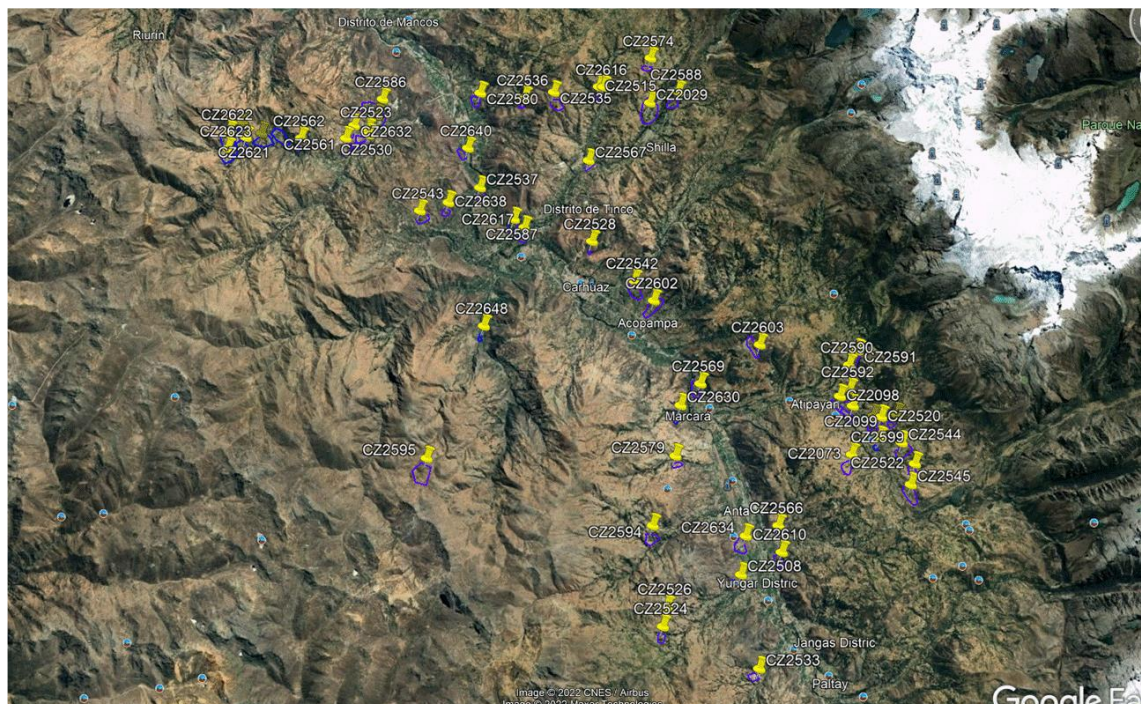


## DIAGRAMA UNIFILAR ALIMENTADORES INVOLUCRADOS EN EL PROYECTO: HRZ286 - HRZ283



2. AMPLIACIÓN DE REDES DE DISTRIBUCIÓN PRIMARIA, SECUNDARIA Y ALUMBRADO PÚBLICO DE: SUMINISTROS DE VENTA EN BLOQUE DE LOS SERVICIOS ELÉCTRICOS DE HUARAZ, CARHUAZ, HUARI, CHIKUIAN Y RECUAY, EN LAS PROVINCIAS DE AIJA, HUARAZ; CARHUAZ; HUARI; RECUAY y BOLOGNESI; EN EL DEPARTAMENTO DE ANCASH.

### Zona de Carhuaz



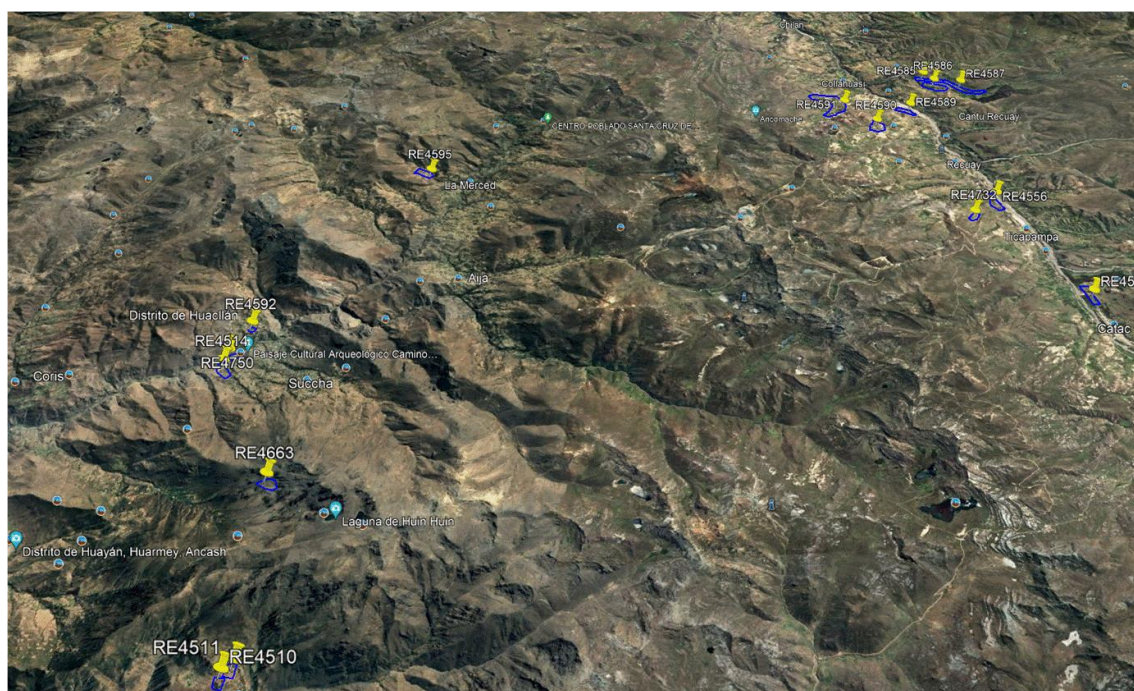


This is a detailed topographic map of a mountainous region in Peru. The map shows a complex network of roads and rivers, with various towns and districts labeled. The terrain is characterized by steep, mountainous slopes, with green areas indicating forested regions and brown/tan areas representing the mountainous terrain. The map includes labels for several towns and districts, such as Pucallpa, Tarma, and various districts. The map also shows a network of roads and rivers, with some roads highlighted in red. The map is oriented with North at the top.

This aerial map shows the study area in the Machaca region of Peru. Two specific locations are highlighted with blue polygons and labeled: HR8911 (on the left) and HR8910 (on the right). The surrounding landscape is rugged and mountainous, with patches of green vegetation and brown, cleared land. A winding road is visible in the lower right. Other labeled locations include Machaca, Santa Cruz de Mosna, and Gracia Pichiu - Chavin - Cahush.



## Zona de Recuay

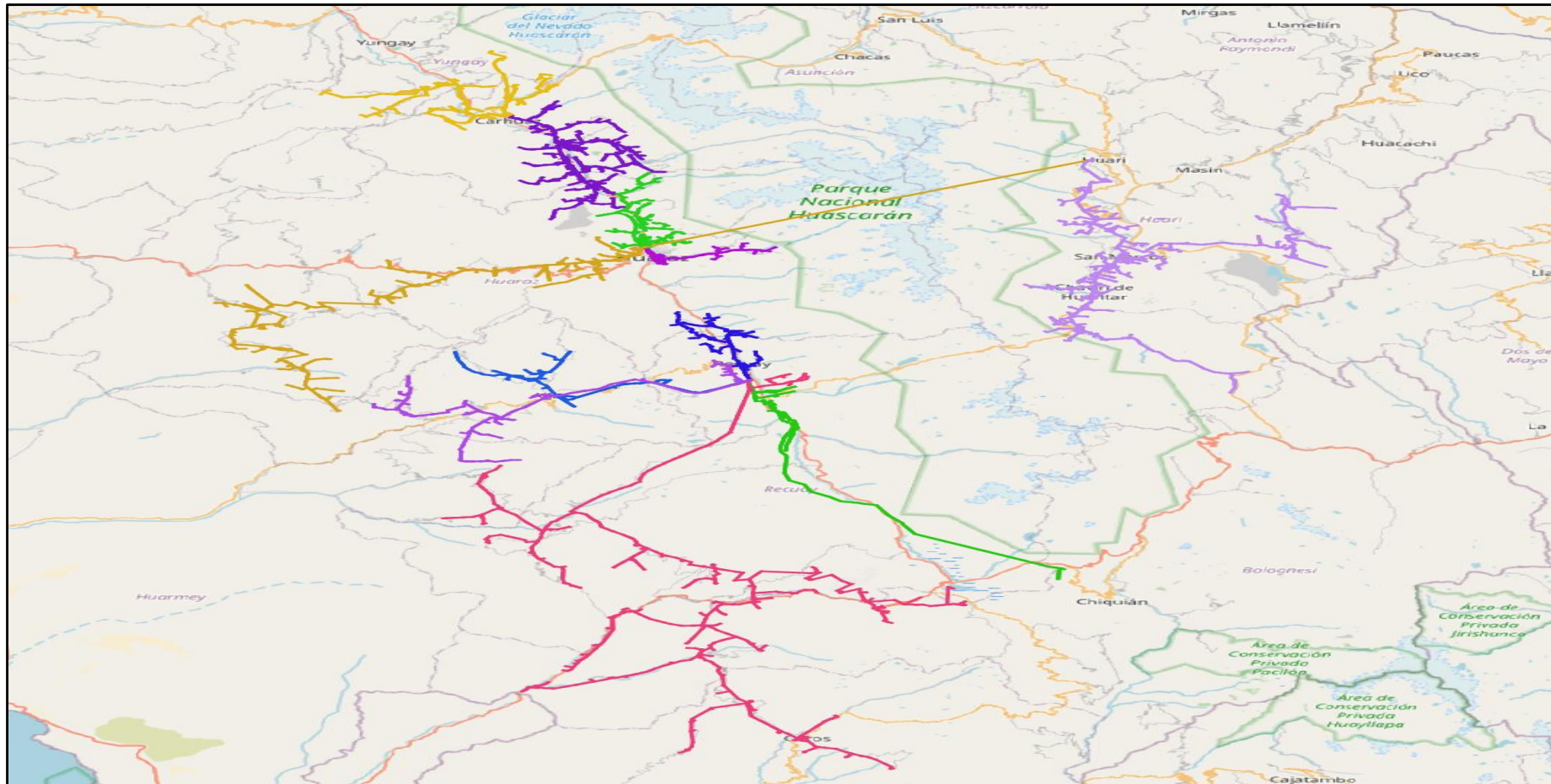


## Zona de Bolognesi





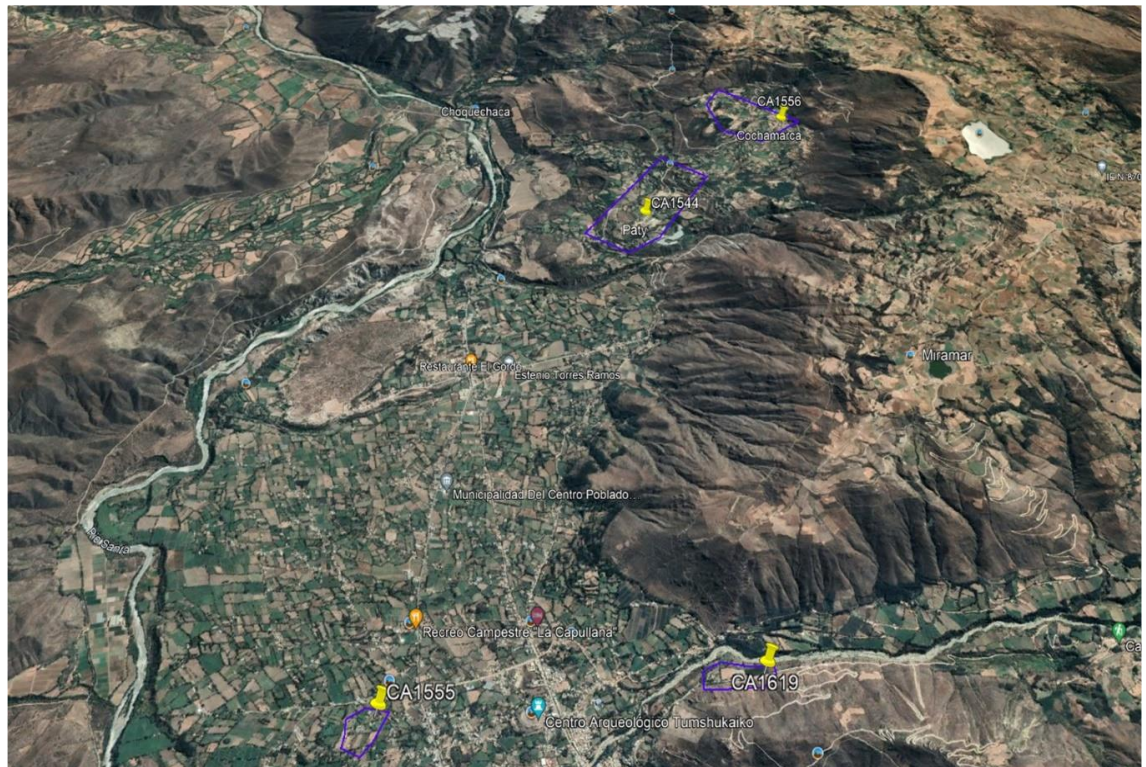
**DIAGRAMA UNIFILAR ALIMENTADORES INVOLUCRADOS EN EL PROYECTO: CRH272, CRH273, HRI203, HRZ282, HRZ283, HRZ286, TIC291, TIC293, TIC294, TIC295, TIC296, PCR391.**



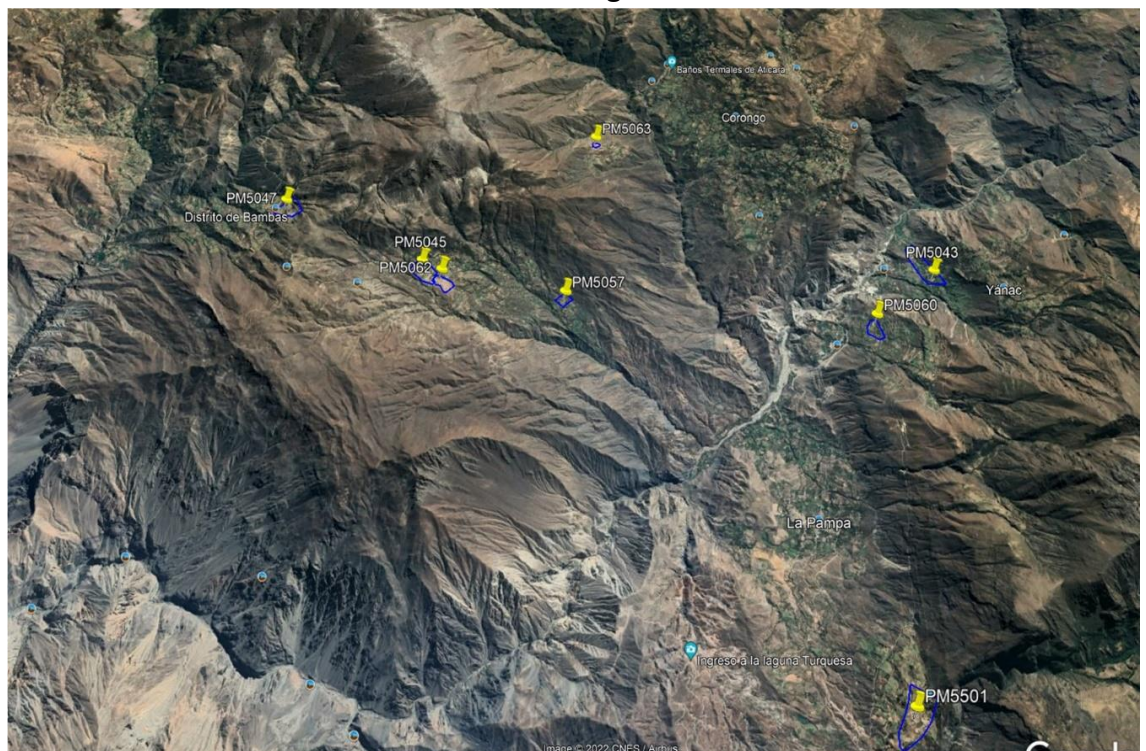


**3. AMPLIACIÓN DE REDES DE DISTRIBUCIÓN PRIMARIA, SECUNDARIA Y ALUMBRADO PÚBLICO DE: SUMINISTROS DE VENTA EN BLOQUE DE LOS SERVICIOS ELÉCTRICOS DE CARAZ, CARHUAZ, POMABAMBA Y LA PAMPA, EN LAS PROVINCIAS DE HUAYLAS, YUNGAY, CORONGO, POMABAMBA Y MARISCAL LUZURIAGA; EN EL DEPARTAMENTO DE ANCASH.**

**Zona de Caraz**

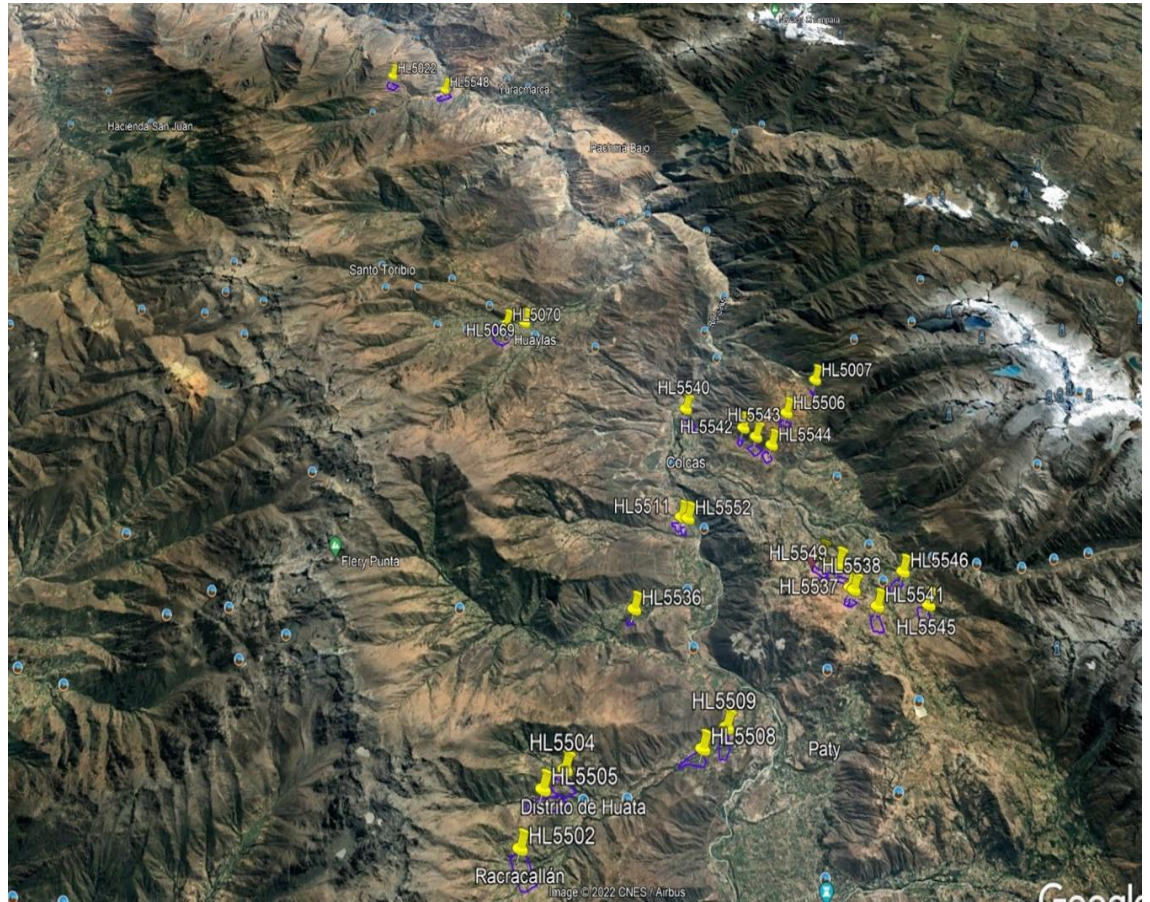


**Zona de Corongo**

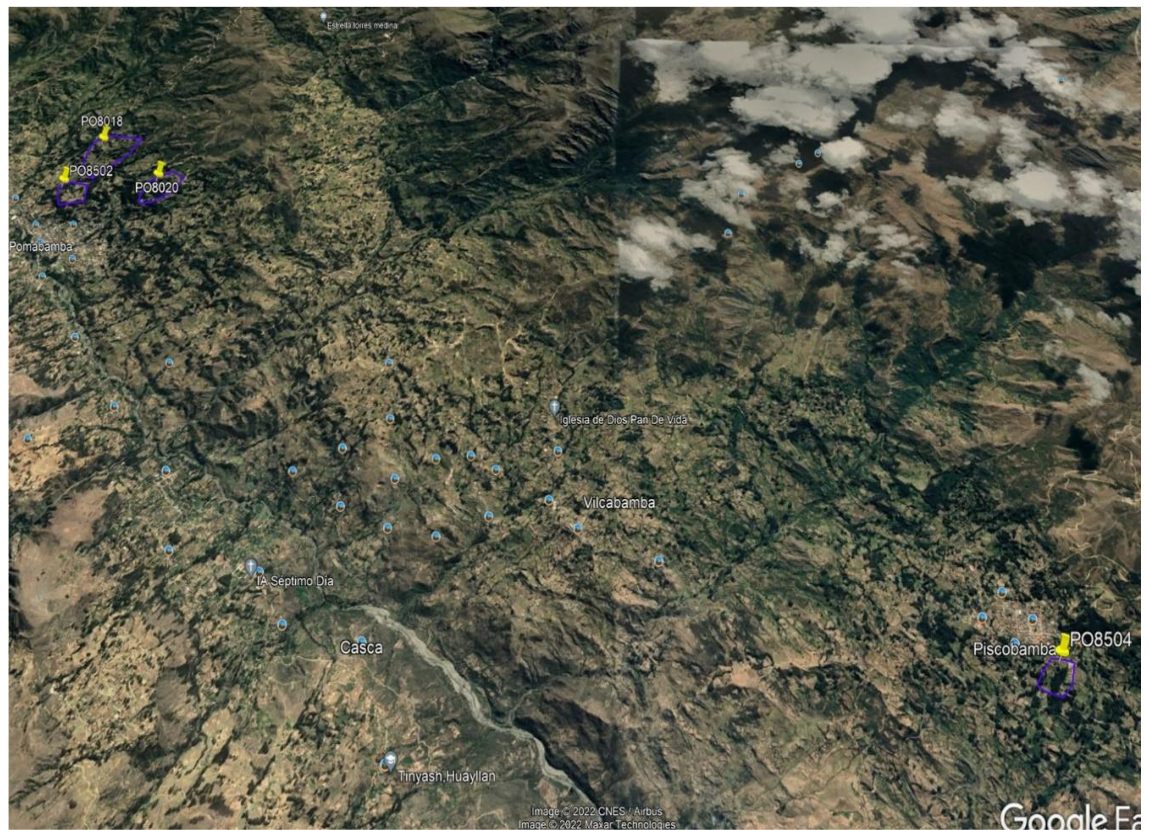




## Zona de Huallanca

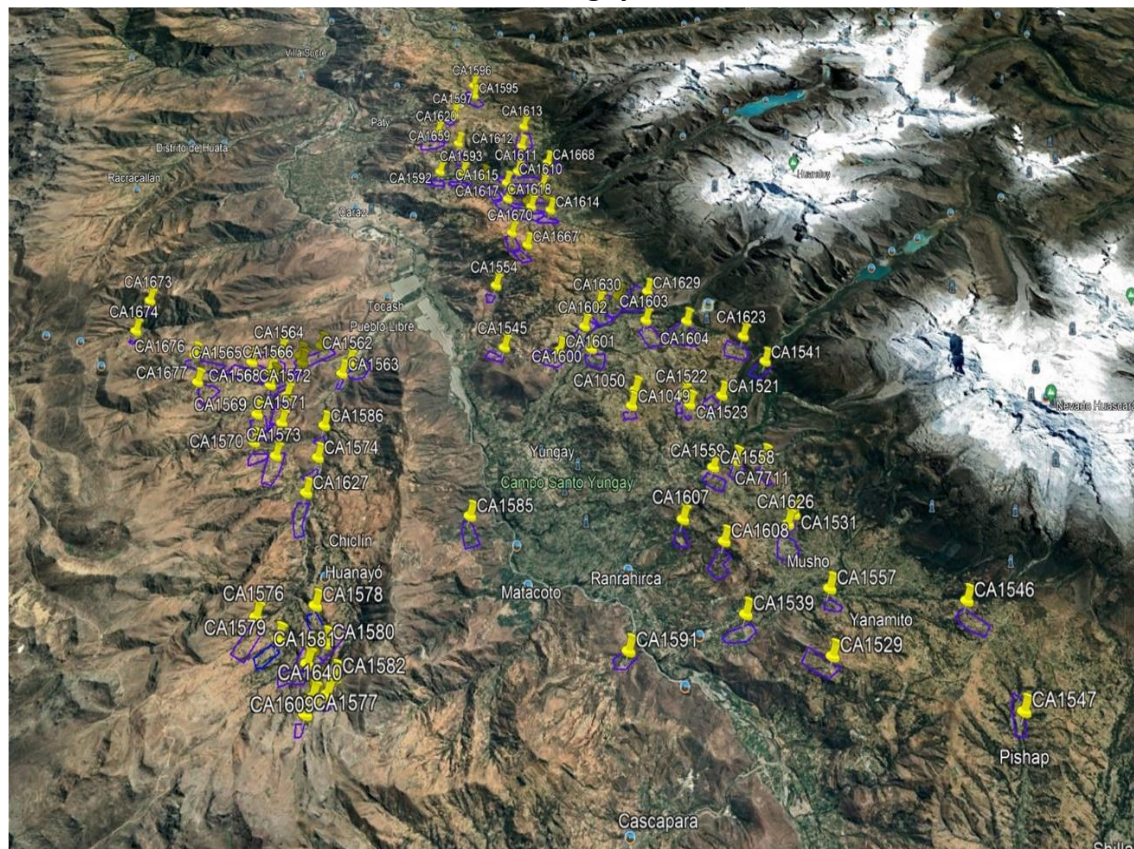


## Zona de Pomabamba





## Zona de Yungay





**DIAGRAMA UNIFILAR ALIMENTADORES INVOLUCRADOS EN EL PROYECTO: CRZ261, CRZ262, CRZ263, CRH273, HLL301, HLL302, HLL303, POM371, PMB003, PAM411, PAM412.**

